



# **HAN MY VIET**

## **AUTOMATION CO., LTD**

*Non-stop development - Continuous improvement*

## TABLE OF CONTENTS

INTRODUCTION	2
MISSION & VISION & DEVELOPMENT MILESTONES	3
DISTRIBUTION SYSTEM	5
DIGITAL CONTROL SOLUTIONS	7
IoT SOLUTIONS AND APPLICATIONS	9
iSAPi ENVIRONMENTAL SOLUTIONS	11
iSAPi ENERGY SOLUTIONS	13
iSAPi SOLUTION FOR CONTINUOUS THICKNESS MEASUREMENT	15
TECHNICAL SERVICE	19
DISTRIBUTED PRODUCTS	21
ANNUAL COMMUNITY ACTIVITIES	49



## HAN MY VIET AUTOMATION CO., LTD



Han Viet store: June 1995  
Open a company: May 2003  
Field: Providing automation, digitization solutions, and devices such as sensors, inverters, temperature controllers, pneumatics,... applied in the field of Automation.  
Address: 203-205 Nguyen Thai Binh, Nguyen Thai Binh Ward, District 1, HCM City  
Hotline: 091 621 6710  
Email: [hmv@hanmyviet.com](mailto:hmv@hanmyviet.com)  
Website: [www.hanmyviet.vn](http://www.hanmyviet.vn)

**MISSION**

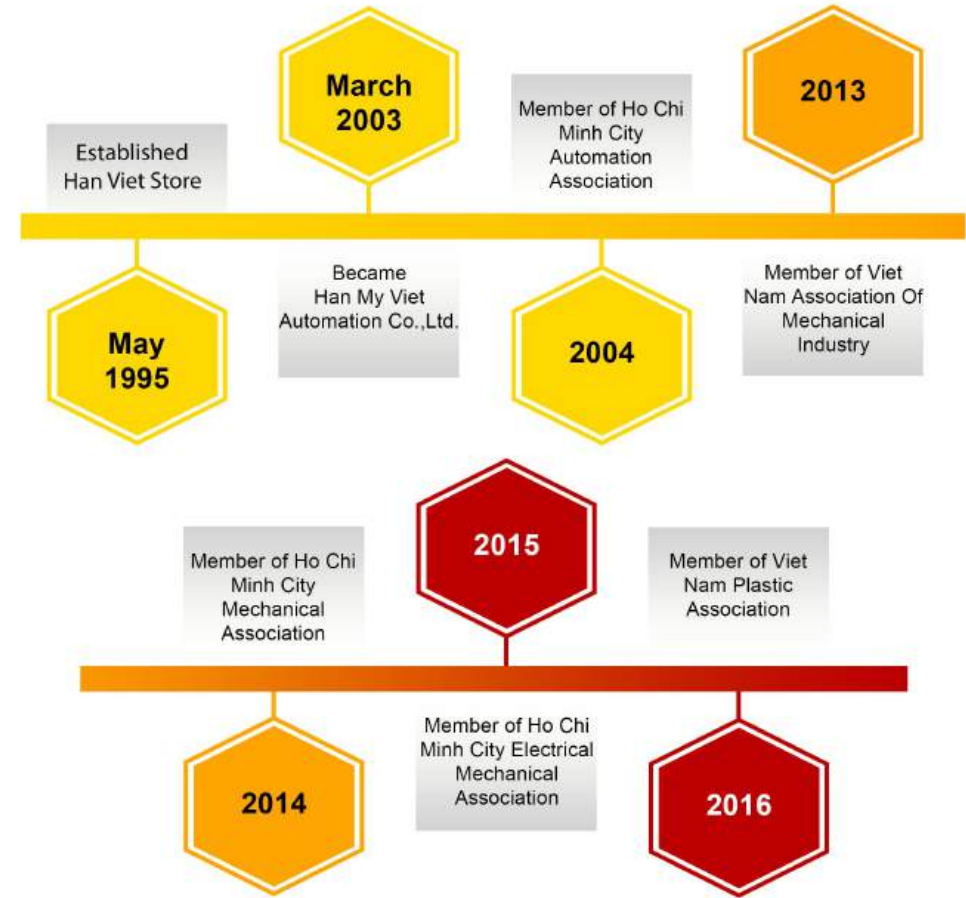
Han My Viet Automation Technology Co., Ltd. always prioritizes providing products with high quality and reasonable cost, with the desire to help the Vietnamese Industrial market increasingly access modern technology

**VISION**

Become a trusted provider of solutions and equipment in the field of automation in Viet Nam



**SOME IMPORTANT MILESTONES IN THE DEVELOPMENT**



## DISTRIBUTION SYSTEM



**HAN MY VIET AUTOMATION COMPANY LIMITED - HA NOI BRANCH**

**HAN MY VIET AUTOMATION**  
HÀ NỘI

📍 72 Bui Ngoc Duong Street, Bach Mai Ward, Hai Ba Trung Dist., Ha Noi.  
☎ (024) 3573 7935 - 098 699 1948  
✉ hmv@hanmyviethanoi.com 🌐 hanmyviet.vn

**HUNG VIET AUTOMATION ELECTRIC COMPANY LIMITED**

**HUNGVIỆT**

📍 1/13, Binh Duc 1 Quarter, Binh Hoa Ward, Thuan An City, Binh Duong Province  
☎ (0274) 363 6508 - 090 310 8416  
✉ hungviet@hungvietautomation.com  
🌐 hungvietautomation.com - mccb.com.vn

**HUNG PHU AUTOMATION TECHNOLOGY COMPANY LIMITED**

**HUNG PHU AUTOMATION**

📍 27 Trieu Quang Phuc Street, Ward 10, Dist. 5, Ho Chi Minh City  
☎ 190 063 3459 - (028) 7300 3459  
✉ hp-auto@hungphu.com.vn 🌐 hungphu.com.vn

**HAN MY VIET AUTOMATION COMPANY LIMITED - BAC NINH BRANCH**

**HAN MY VIET AUTOMATION**  
BẮC NINH

📍 6 Ngoc Han Cong Chua Street, Hoa Dinh Quarter, Vo Cuong Ward, Bac Ninh City  
☎ (0222) 390 6234 - 098 579 9950  
✉ hmv@hanmyvietbacninh.com 🌐 hanmyviet.vn

**HAN MY VIET AUTOMATION COMPANY LIMITED - DA NANG BRANCH**

**HAN MY VIET AUTOMATION**  
ĐÀ NẴNG

📍 26 Tang Bat Ho Street, Hai Chau 2 Ward, Hai Chau Dist., Da Nang City  
☎ 033 636 3965  
✉ hmv@hanmyvietdanang.com 🌐 hanmyviet.vn

**HOP KHANG AUTOMATION COMPANY LIMITED**

**Hợp Khang**  
Factory Automation

📍 76/1 Pham Van Thuan Street, Binh Da Ward, Bien Hoa City, Dong Nai Province  
☎ (0251) 629 0790 - 090 463 3600 - 098 327 0420  
✉ hk@hopkhang.com 🌐 hopkhang.com

**HAN MY VIET AUTOMATION COMPANY LIMITED**  
29 Years Importing & Distributing Automation Equipment

**HAN MY VIET AUTOMATION**  
Since 1995

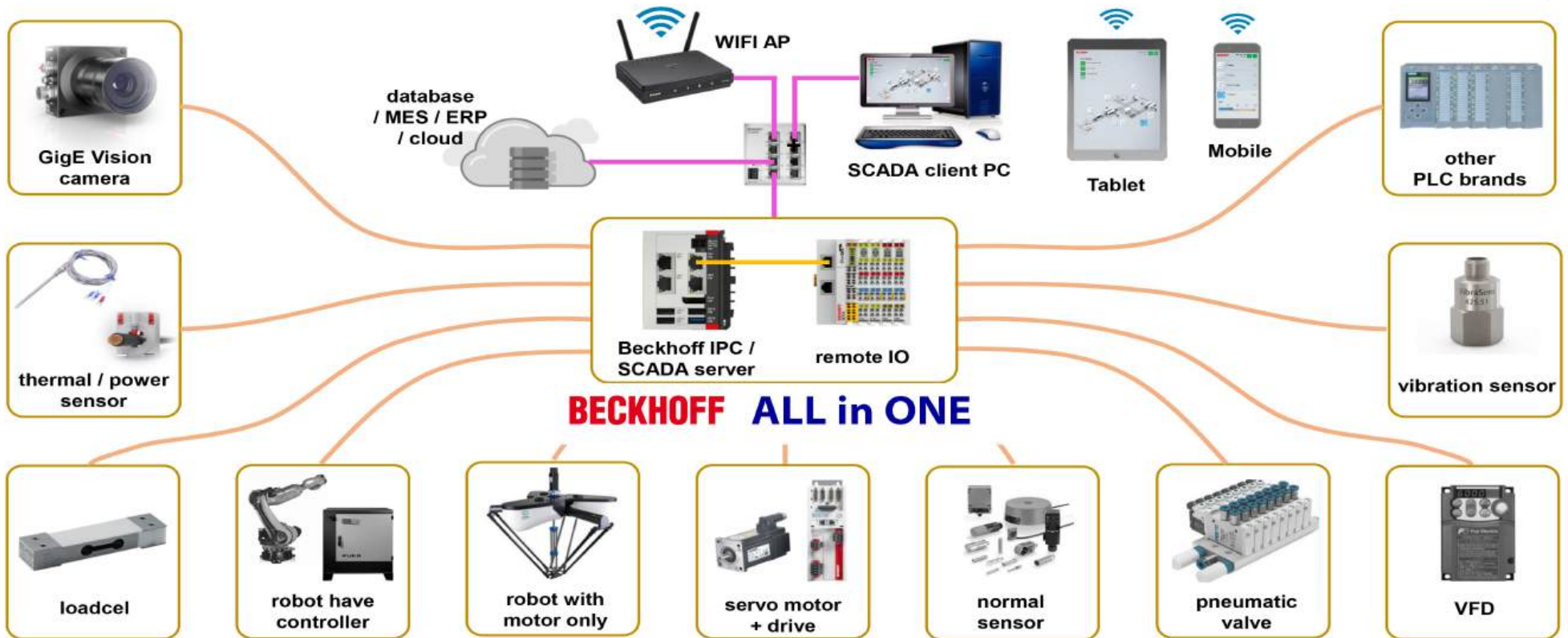
📍 203-205 Nguyen Thai Binh St., Nguyen Thai Binh Ward, Dist.1, Ho Chi Minh City  
☎ (028) 3821 6711 - 091 621 6710  
✉ hmv@hanmyviet.com 🌐 hanmyviet.vn

# SOLUTIONS, TECHNICAL SERVICES

## AUTOMATIC, DIGITAL CONTROL

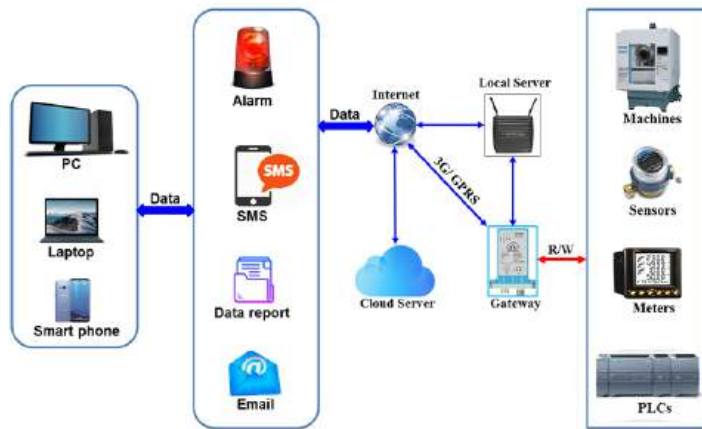


Website: hanmyviet.vn



## IoT SOLUTIONS & APPLICATIONS

Solution model for IoT applications in industry



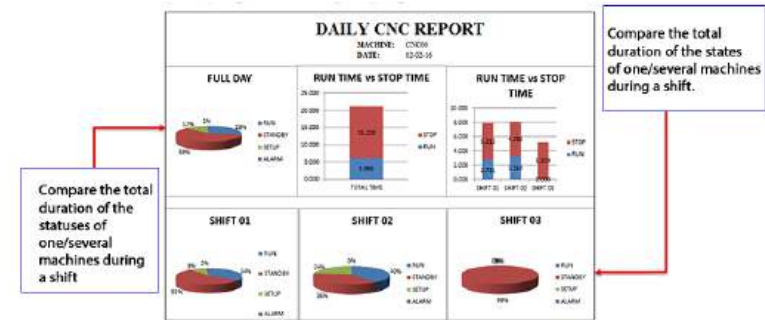
Why should IoT be applied?

- Improves the efficiency of machinery usage.
- Manages energy consumption effectively.
- Automates reporting as required.
- Increases data accuracy and reduces labor costs.
- Monitors in real-time.
- Ensures preventive maintenance.

Sensors can be placed in critical areas such as temperature control centers, main switches, vibration sensors, etc.

Data can be analyzed and displayed in real-time, enhancing the ability to respond immediately when abnormalities start to minimize downtime.

➤ Typical report sample



Report CNC machine activity chart



Report workshop energy consumption

**iSAPi ENVIRONMENT:**

**Solution for monitoring temperature, humidity, CO<sub>2</sub>, and light**

➔ The importance of solutions to monitor temperature, humidity, CO<sub>2</sub>, and light:

- The environment directly affects business.
- Optimize operations, reduce production costs.
- Prevent waste by detecting and correcting errors promptly.
- Ensure safety for workers and production environment.

➔ **Object:**

The factory has the following characteristics:

- High costs of electricity, water, and environmental treatment.
- Operating near residential areas, using many high-capacity machines (several tens of kW or more).
- Continuous lighting, greenhouse, and large-scale irrigation systems operate automatically according to factors such as temperature, humidity, pressure, light, and CO<sub>2</sub> (natural, artificial).
- Heat treatment machinery emits large amounts of heat such as boilers, chillers, and provides water temperature.
- Automatic breeding system, incubator, processing and freezing.



Indicators / Counters / Multi-function Meters

➔ **Advantage:**

- Monitor and analyze temperature, humidity, light, and CO<sub>2</sub> data in real time with cycles up to every ms.
- Monitoring is performed by recording parameters through sensors and measuring devices.
- Monitor an unlimited number of devices.
- Remote monitoring via internet on smartphone, tablet...
- Be sure to store data when connection is lost or to improve the device/system.
- Partial implementation and easy expansion at optimal cost.
- Flexible to meet different conditions.



➔ **Products with features suitable for the solution:**



Temperature and humidity controller

## iSAPi ENERGY

### Electricity - Compressed Air - Gas - Water – Steam Monitoring Solution

#### ➔ Importance of Electricity - Compressed Air - Gas - Water – Steam Monitoring Solution:

- Energy is one of the important factors of production and business activities.
- Helping optimize the production process and reduce operating costs.
- Protecting the environment by reducing energy consumption.
- Detecting and resolving system issues to prevent waste.
- Ensuring safety for workers and the production process.

#### ➔ Applicable objects:

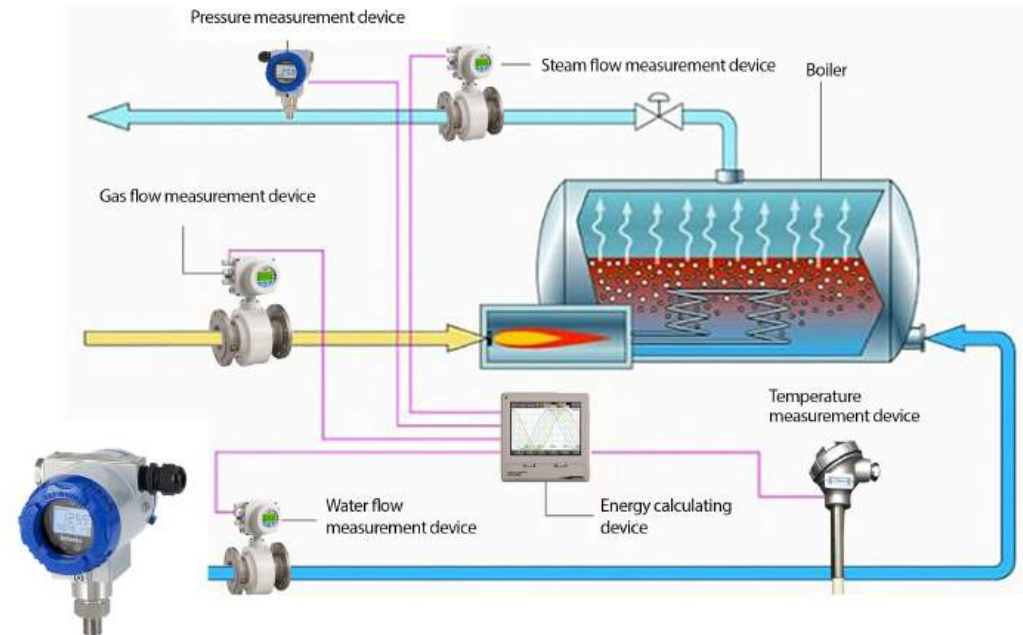
Most industries such as:

- Heavy industries (Chemicals, Oil and Gas, Paper, Steel, Cement...)
- Export industries (Textiles, Mechanical Processing, Fisheries, Footwear...)
- Factories with complex machinery systems, heat treatment equipment, high-power machines...



#### ➔ Advantages:

- Monitoring energy sources such as electricity, gas, compressed air, water, and steam through flow rate, temperature, pressure, power, current, and voltage.
- Real-time energy monitoring and data statistics with cycles as short as milliseconds.
- Can be implemented in stages and easily expanded with optimized costs.
- Long-term data storage in case of loss of connection.
- Flexibly meet various conditions.
- Can be integrated with existing control systems.





## iSAPi CONTINUOUS THICKNESS MEASUREMENT

### Continuous Accurate Thickness Measurement Solution

#### ➔ Importance of continuous accurate thickness measurement solution:

- Accurate thickness measurement is an important step in production.
- Optimizing the production process, reducing operating costs, and minimizing errors on automated lines.
- Detecting and fixing problems, preventing waste and saving costs.
- Ensuring absolute standard of product quality.

#### ➔ Applicable objects:

Most industries such as:

- Processing industries (Rubber, Steel, Panel, Paper, Gypsum, Glass...)
- Export industries (Textiles, Wood and wood products, Iron and steel, Vehicles & auto parts...)



#### ➔ Advantages:

- Real-time monitoring with a cycle of 2m/s.
- Measuring product thickness by using sensors, accurately determining each position.
- Creating and generating automatic reports for dimensional control and error detection.
- Automatically alerts when there is an abnormality or the thickness exceeds regulations.
- Can be implemented in stages and easily expanded with optimized costs.
- Ensuring long-term data storage in case of connection loss.
- Flexibly meet various conditions.
- Can be integrated with existing control systems.
- Remote monitoring via internet on smartphones, tablets.



Example of Steel Plate Manufacturing Industry

## 4.0 MAINTENANCE

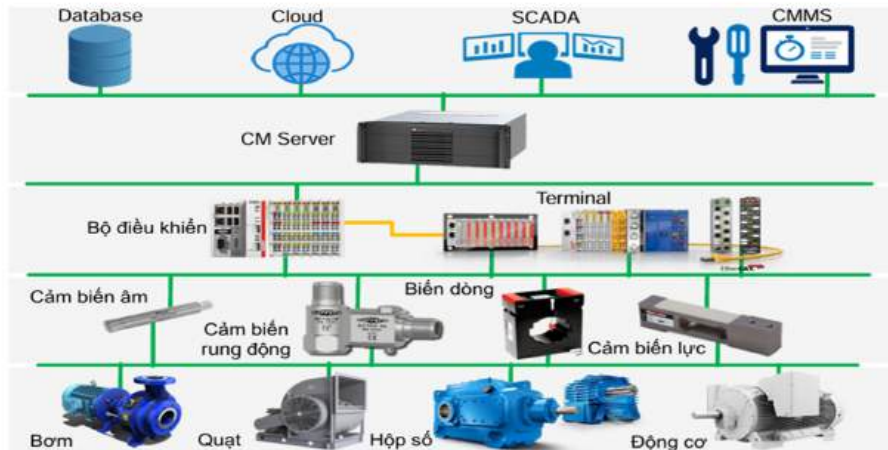
### Predictive Maintenance – Online Machine Monitoring

#### ➔ Solution Features:

- Monitor machine conditions, detect early failures, optimize maintenance, and minimize machine downtime.
- PC Control technology with powerful hardware and optimized software.
- Collecting parameters: vibration, current, temperature, pressure, torque.
- Overall data and frequency spectrum are stored continuously on any server.
- Connect, monitor, and control with various software systems: CMMS, MES, SCADA, PLC.

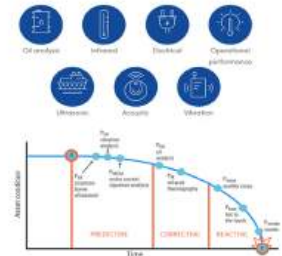
#### ➔ Predictive Maintenance System Architecture:

- Improve machine reliability through continuous monitoring and timely intervention.
- Enhance the ability to predict and react to problems, helping to maintain continuous operation.



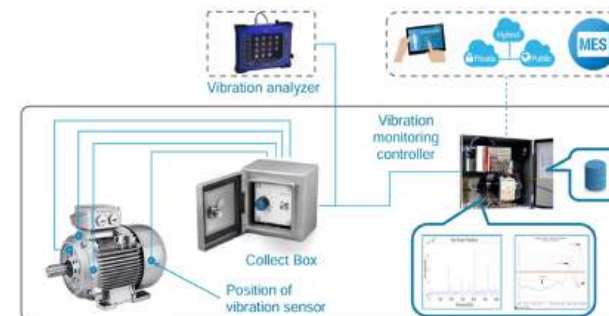
#### ➔ Advantages:

- Reducing maintenance time and costs.
- Increasing machine life.
- Increasing uptime and performance of machinery.
- Enhance productivity and production quality.
- Minimize machine downtime.

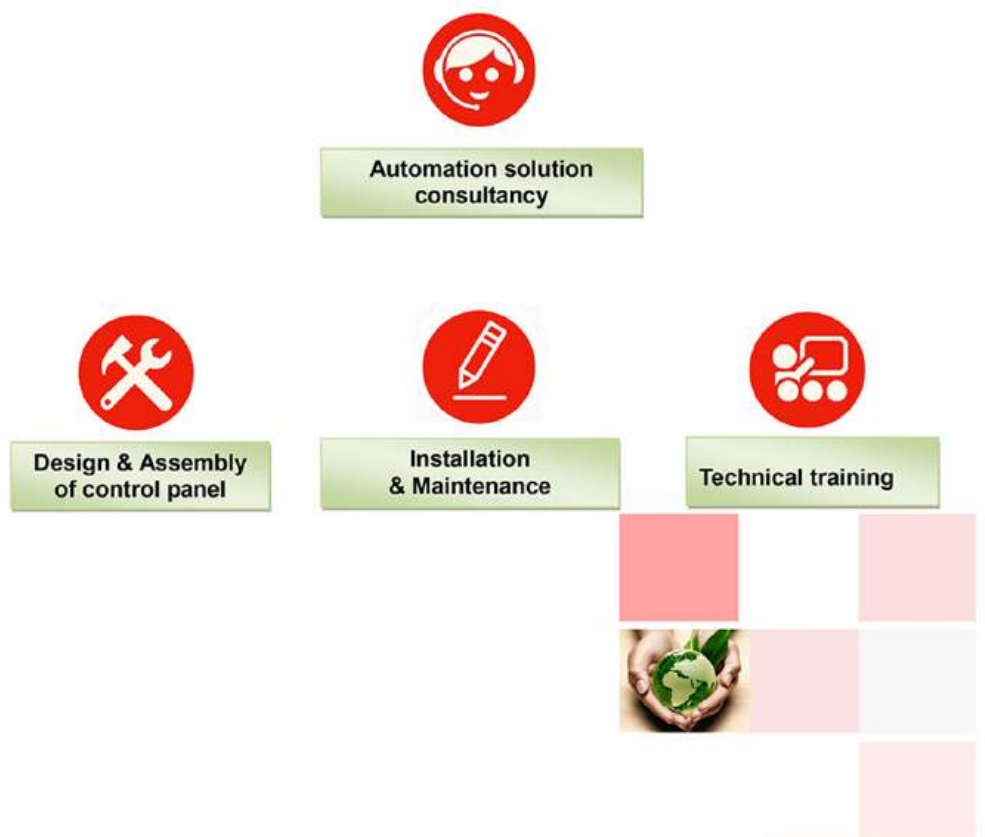


#### ➔ Actual system architecture:

- Real-time automatic data collection.
- Historical data storage for measured parameters.
- Display real-time and historical measurement parameters.
- Warning when there are signs of damage.
- Automatically suggest possible future damage.
- Allow automatic report generation.
- Connect with other devices or systems such as Database, PLC, MES, CMMS, Cloud.
- Automatically send alerts via email and text message to responsible people.



# TECHNICAL SERVICE



## Installation & Maintenance:

- Survey - Consult the fastest solution to solve the problem ◊ reduce down-time.
- Consult compatible replacement devices - integrate extended features.
- Install & check to make sure that system operation is stable.



Apply LS inverter to tension solution



Carimax SaiGon Factory

## MACHINE CONDITION MONITORING SYSTEM

### Advantages



#### Advantage 1

Continuous monitoring of machine and equipment conditions to ensure timely detection of any changes and maintain stable operations.



#### Advantage 2

Early detection of damage and optimization of the processing workflow not only significantly saves costs and time but also prevents machine downtime, avoiding potential losses.



#### Advantage 3

Converting data into digital formats such as tables, charts, and reports allows for easy viewing and exporting of data, thereby improving the efficiency of maintenance and equipment management.

## PRACTICAL PROJECTS



Entobel

“AUTOMATIC LARVAE WEIGHING MACHINE”



Rheem

“SYSTEM UPGRADE SERVICE”



DRC

“AUTOMATIC TIRE PLANER”

## SUCCESSFUL PROJECT

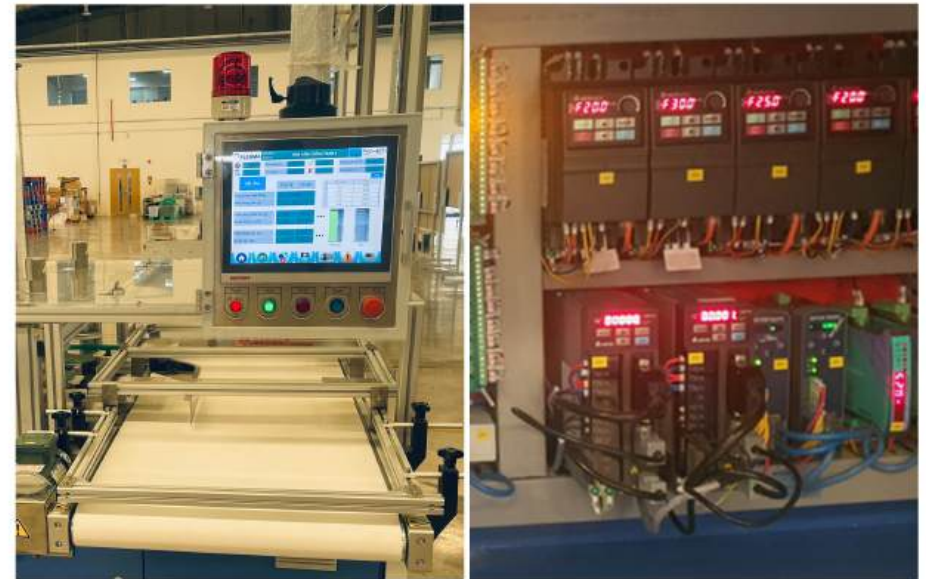
# Entobel

- **Industry:** Animal feed production
- **Project:** Automatic larvae weighing machine
- **Duration:** 1 month (from September 2023 to October 2023)



### ■ Requirements and Goals:

- Provide automatic machine to weigh food and worms with error margin not exceeding 5%.
- Speed: 500 cups/hour/line.
- Data storage and remote monitoring.



Machinery

Control cabinet

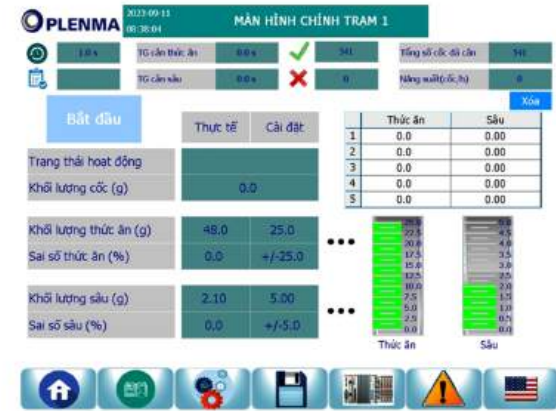
# Entobel

## Result:

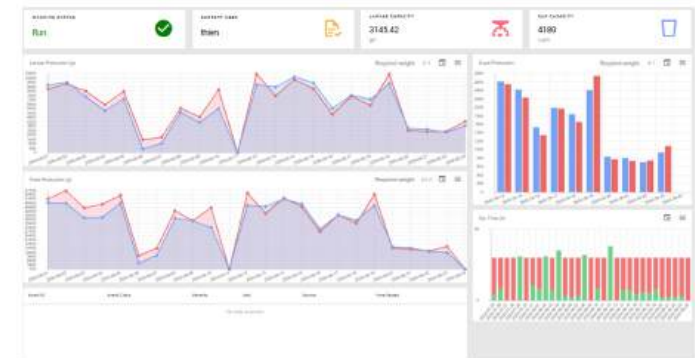
- The project was completed on schedule and met the exact technical specifications required by the plant.
- Successfully built Database and IoT Web.



## Dashboard



## Web IoT



## SUCCESSFUL PROJECT

# Rheem



### Control system upgrade - Replacing Beckhoff IPC and optimizing configuration

- **Industry:** Household electrical appliance manufacturing
- **Project:** System upgrade service
- **Duration:** 1 month (from October 2023 to November 2023)



### ■ Requirements and Goals:

- Replace and install a new IPC.
- Configure the new IPC communication with peripheral devices (Axis, Safety).
- Ensure the machine operates as before.



Old IPC CP6222-1001-0000  
Windows XP

Control cabinet

# Rheem



## Result:

- Successfully completed the Beckhoff IPC replacement on schedule.
- Installed and reconfigured the axis and safety communication system to ensure the machine operates smoothly as before.

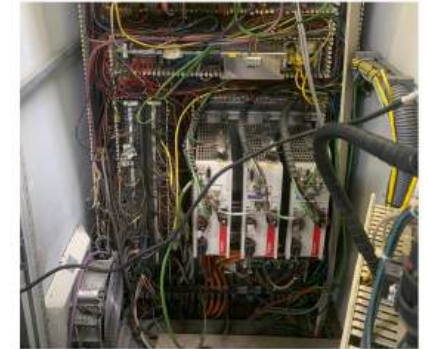


New IPC CP6221-0002-0070  
Windows XP



Robot system

## ■ Operation checking





## SUCCESSFUL PROJECT

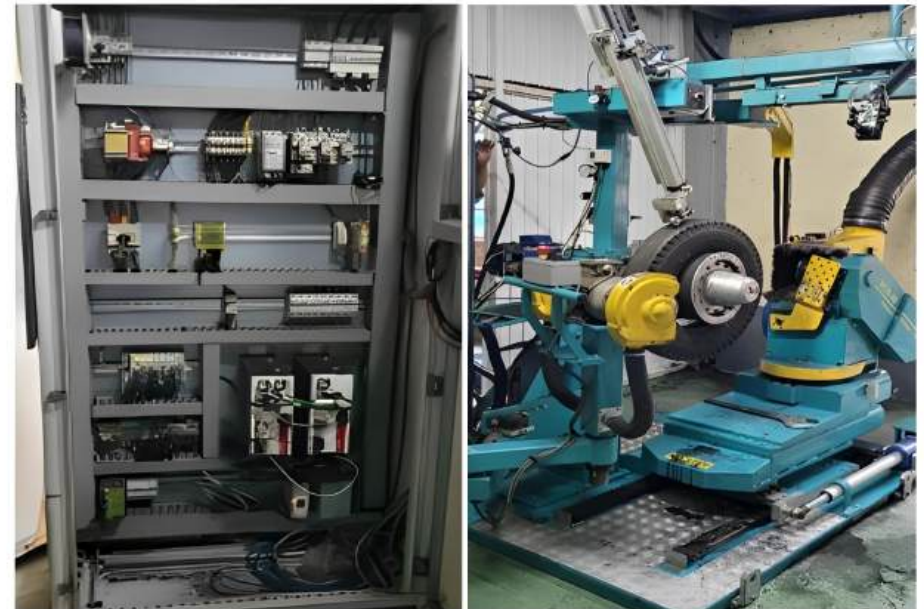


- **Industry:** Tire and rubber
- **Project:** Automatic tire planer
- **Duration:** 1 month (from November 2023 to December 2023)



### ■ Requirements and Goals:

- Fully automated Tire Planer
- Monitor production status and machine parameters
- Ready for connectivity & visibility



Control Cabinet

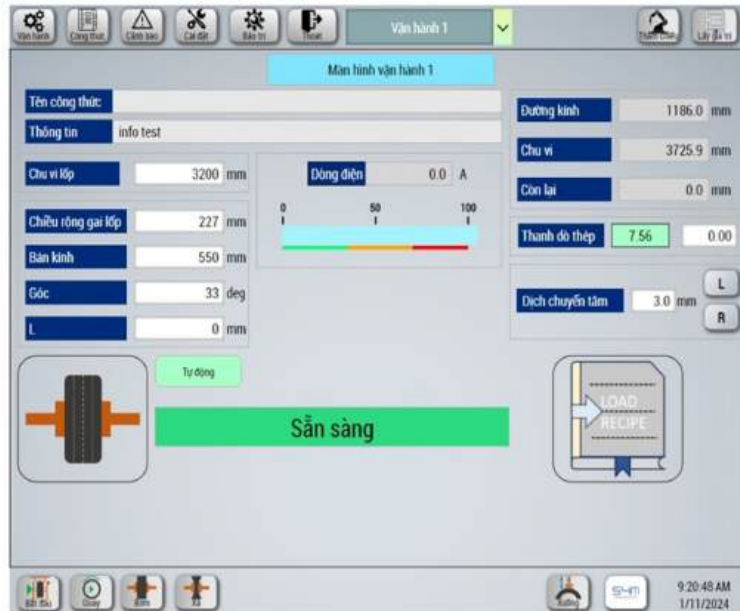
Machinery

## DRC

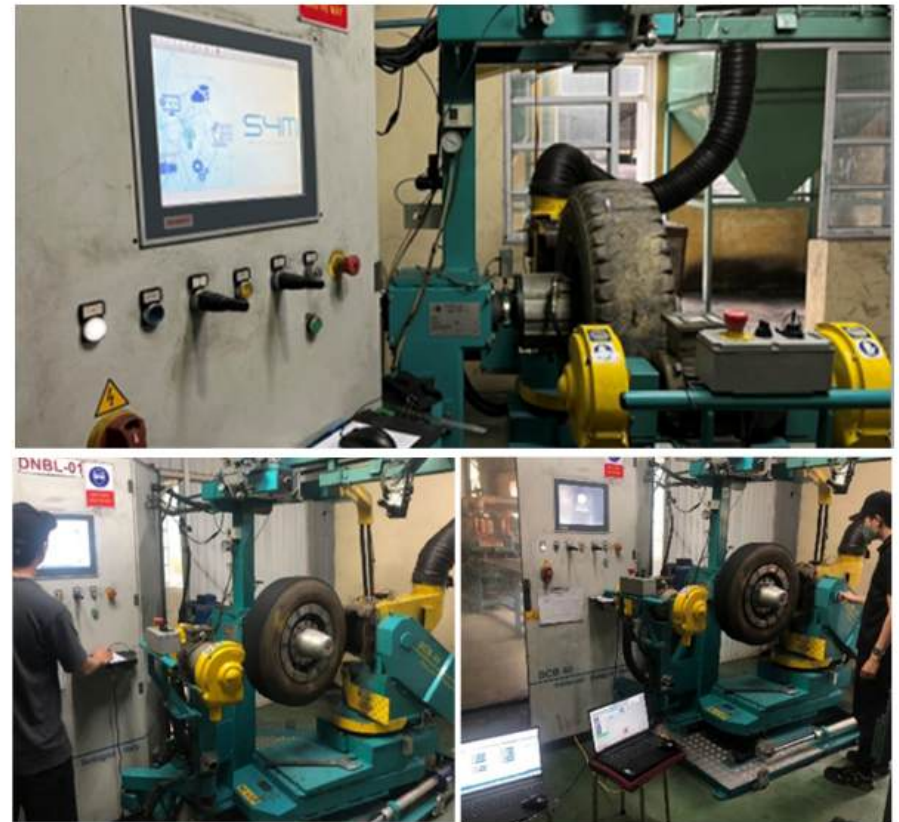


### Result:

- Complete the project on schedule and the process runs completely automatically.
- Increased productivity and efficiency. Ready for connectivity and visibility.



Dashboard



# DIVERSE PRODUCT DISTRIBUTION



# HAN YOUNG NUX

## Counter / Timer



LC Series



T21 Series

## The temperature controller



AX Series



VX Series



Limit Switch



Push Button



Proximity sensor



Photoelectric sensor



Rotary encoder



Terminal Block



Buzzer



Power Supply



Signal Light

# Autonics

Sensor



Safety Device



The temperature controller



TK series



TH4M series

Counter



Timer



Rotary encoder



Voltage stabilizer power supply



5 phase stepper motor





Electrical equipment



Servo



PLC



Contactors & Overload Relays

Circuit Breaker



MCB  
Miniature Circuit Breakers



Metasol  
MCCB/ELCB  
Molded Case Circuit Breakers  
Earth Leakage Circuit Breakers

LS ELECTRIC | Inverter





### MOLDED CASE CIRCUIT BREAKER (MCCB)

NXM Series  
Number of poles: 2P, 3P, 4P  
Rated current: 10A~1600A



Modular contactor  
NCH8 Series



Contactor NXC Series



NXR Series Thermal Relay

### MINIATURE CIRCUIT BREAKER (MCB) & ACCESSORIES



### Switches, dimmers, sockets - G New7 Series



Switch - push button - indicator light



Limit Switch



Voltage protection relay



24/7 Time switch



Timer



Ampere/ Volt digital meter  
and multi-functional meter



kWh meter



Isolation transformer  
NDK Series



### Electrical equipment



XA2 Series switches - push buttons



GXU Series HMI screen



PLC Modicon M100, M200,...



ABL2 Series power supply



Easy Altivar 310



Easy Altivar 610



Tower lights - warning lights XVG Series

### Soft starter



Altistart 01



Altistart 22



Altistart 48

### Switchgear



MCCB - EZC Series



Contactor LC1D Series



MCB - A9D Series



# CONOTECH



## The temperature controller DSFOX-X10 & DSFOX-XD20

Application:

- Control freezer temperature,
- Temperature control in the egg incubator,...



## FOX-2003 temperature controller

Application: temperature control of freezers and refrigerators



## Humidity controller FOX-1H



## Temperature display unit FOX-PM5000



## Multi-function meter



DM2 Series

## PID temperature control



CNT-P400/P410



CNT-P700

## Counter/Timer



FOX-CMT7



## Greenhouse's Temperature, humidity, CO<sub>2</sub> & light controller FOX-83TC



## Rain sensor CNT-WJ24

Close/open the canopy when it rains

# HITACHI

## LH1 Series



## SJ-P1 Series



## SH1 Series



# Inverter



## PsH100 Series

### Application



Fan



Pump



## WJ200 / WJ200N Series

### Application



Crane



Conveyor



Temperature Sensor

Wire type Temperature probe



Onion type Temperature probe



Switch - Push button  
- Indicator light



Relay



Power Supply



Relay

Huba Control

Pressure sensor



520 Series



604 Series



528 Series



699 Series



# Inverter

## C200 Series



## S100 Series



### Application



Flow Switches  
HF Series



Pressure Switches  
HS Series



Gas, oil, water valves  
HPS & HPW Series



Gas valve  
HDG-EX series



Gas filter  
HGF series



Pneumatic Actuator Valves



Agricultural irrigation valves



### Level Switch

JB-SD Series



JC7-SD



JC7-SL



JC7-ST



JC7-SH



JRS-S



JRS-D



JF-32



JF-302T



JD-100 Series



### Silencer

AS Series



### Air filter



### Cylinder



GDC Series

### Solenoid valve



PHS Series




**GPC Series**

**GPL Series**

**GPUC Series**

**GPUL Series**

**Steam Pipe / Air Pipe**

**2-end Throttle valve GNSF Series**

**GPUT Series**






**5/2 Valve base 1/8 thread & 1/4 thread**

**5-way 2-position valve & 5-way 3-position valve**

**3-way 2-position valve**







### Cylinder



AXE & AXB Series  
size 20, size 25, size 32, size 40



AM Series  
size 40, size 50, size 63, size 80

### Fitting & Air tube



Fitting - SQ Series



Air duct

### Air filter



### Solenoid valve



RDS Series



Gas, oil, water valves  
DW Series



Hot steam valve  
DWS Series



Valve base DMS3 & DMS5 Series

# TOSHIBA IE3 STANDARD High Performance - Save Electricity Motor



Foot mounting type

Flange mounting type

Foot and flange mounting type

Application



Pump



Conveyor



Fan

# TUNG LEE GEARED MOTOR



Right angle worm gear motor



Foot-mounted gear motor



Flange-mounted gear motor

# SGP ELECTRIC MOTOR



Foot mounting type



Flange mounting type



Foot and flange mounting type



## Some annual community activities

- Organizing annual teambuilding programs for employees, to create a useful playground and strengthen the spirit of solidarity within the company.
- Participated in organizing seminars to share in-depth knowledge about technology with students at Hutech University of Technology.
- Participated in sponsoring career guidance programs for Polytechnic University students.



Hanyoung Company coordinated with Han My Viet Company to organize the Workshop "Temperature control solutions with Hanyoung Nux platform".

- Every year, Han My Viet awards scholarships to students with good academic achievements at Cao Thang Technical College.
- Participating in competitions for students of Cao Thang Technical College.



Mr. Smith Park - CEO of Conotec coordinated with Han My Viet to sponsor the "Funny LED" contest that took place at Cao Thang College.

**About us:**

203-205 Nguyen Thai Binh St., Nguyen Thai Binh Ward, District 1, Ho Chi Minh City

☎ (028) 3821.6711 / 091.621.6710 ✉ [hmv@hanmyviet.com](mailto:hmv@hanmyviet.com) 🌐 [hanmyviet.vn](http://hanmyviet.vn)